

TECHNICAL DATASHEET



Article: Style 635
Setting (Thr/cm): 6,5/6,0
Weave: Twill 3/1
Finish: loomstate

<u>Construction:</u>	<u>Warp</u>	<u>Weft</u>
Yarn material ¹⁾:	Kevlar® 49 T 968 / T 968 TG + Carbon 3K (1:1)	Kevlar® 49 T 968 / T 968 TG + Carbon 3K (1:1)
Yarn number ¹⁾:	127 + 200 tex	127 + 200 tex

<u>Technical Data:</u>		<u>Unit</u>	<u>Target</u>	<u>+/-</u>	<u>Tolerance</u>
Fibre density ^{1) 3)}	Warp	g/cm³	1,45/n.G.	+/-	0,05/n.G.
	Weft	g/cm³	1,45/n.G.	+/-	0,05/n.G.
Linear density ¹⁾	Warp	tex	132/200	+/-	6/10
	Weft	tex	132/200	+/-	6/10
Twist ¹⁾	Warp	T/m		+/-	
	Weft	T/m		+/-	
Setting	Warp	Thr./cm	6,5	+/-	0,5
	Weft	Thr./cm	6,0	+/-	0,5
Weave			Twill 3/1		
Weight		g/m²	210	+/-	10
Dry weight		g/m²	210	+/-	10
Moisture content		%	2,5	+/-	max.
Thickness ²⁾		mm	0,37	+/-	
Width		cm	as ordered	+/-	1

¹⁾ = n.G. = depending on order and yarn specification

³⁾ = no measure, certified by supplier

²⁾ = approximate value, not for release

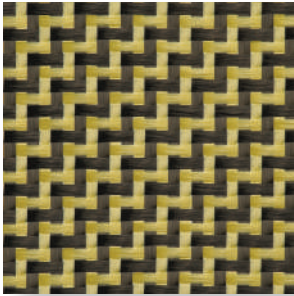
Remarks:

Date 30.09.02	Q.A. Monika Kampen	This Datasheet does not include Revision Service.
-------------------------	------------------------------	--

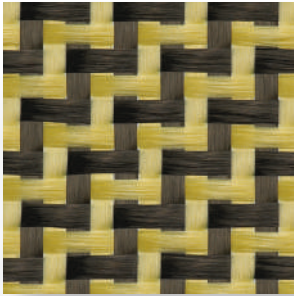
TEXTILE STRUCTURE



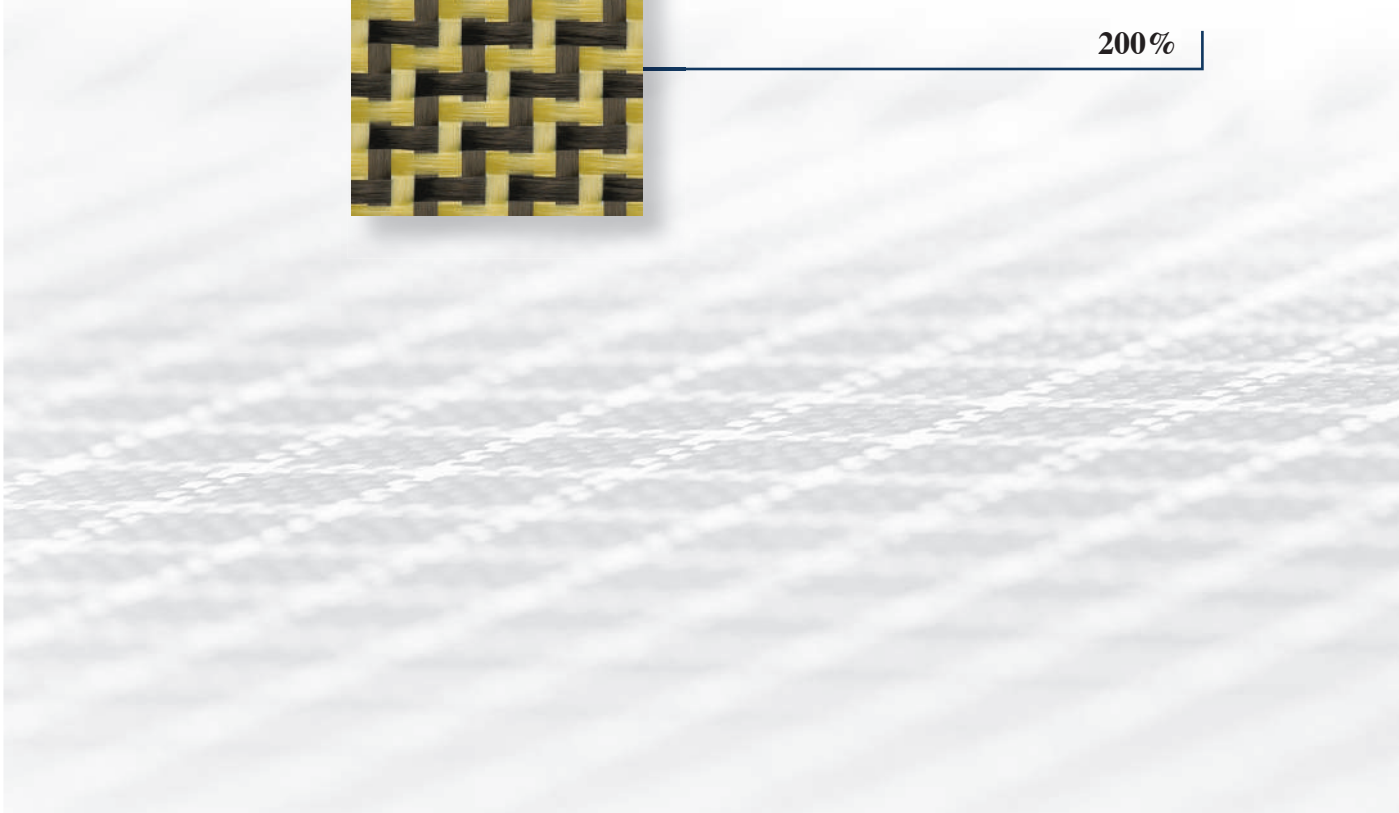
Article: Style 635
Setting (Thr/cm): 6,5/6,0
Weave: Twill 3/1
Finish: loomstate



100%



200%



warp

weft

